

## SET

ดัชนีราคาหุ้นตลาดหลักทรัพย์แห่งประเทศไทย

Resistance 1,570 / 1,575

Support 1,550 / 1,545

Adjust Stop 1,551.10 (Risk 0.58%)

Trailing Stop 1,543.37 (Risk 1.08%)

Base Stop 1,514.70 (Risk 2.92%)

Major Base Stop

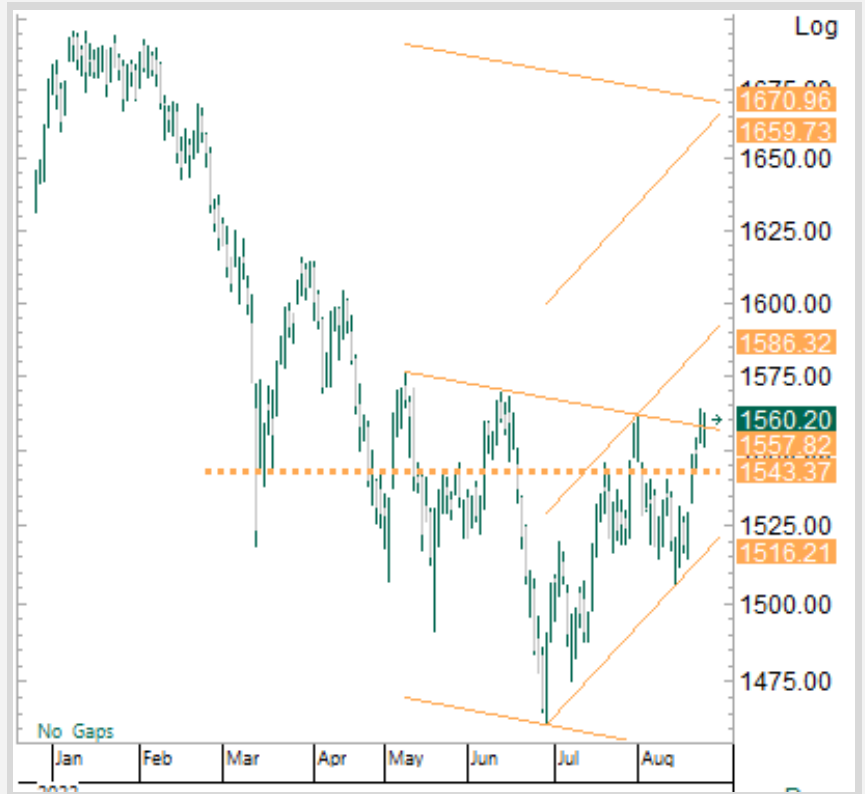
- 1,461.61 (Risk 6.32%, 29/06/2023)

Highest Price at this Cycle

- 1,563.62 (Discount 0.22%, 24/08/2023)

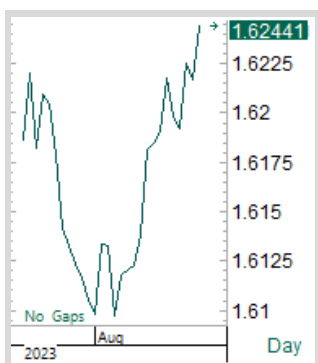
Short-term Trend - Up

Long-term Trend - Up

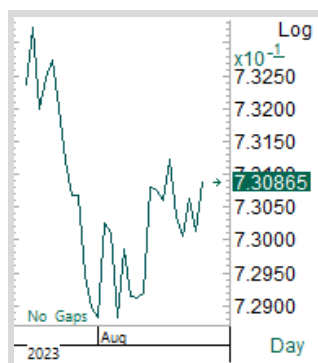


# ตั้งหลัก ลุ้นทดสอบ High อีกครั้ง

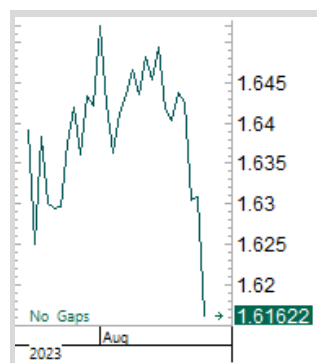
ระมัดระวังเพียงแรงขายทำกำไร ราคาปิดทำ New High ได้แล้ว ลุ้นโอกาสเปลี่ยนแนวโน้มเป็นขาขึ้นเต็มตัว สังเกตติดตามในช่วงระหว่างการเปิดเทรด การรอเลือกหุ้นเลือกกลุ่มที่แข็งแกร่งกว่าตลาด ณ เวลานั้น (Realtime Scan) จะมีความได้เปรียบ ช่วงเวลาที่มีความผันผวนมาก ควรปฏิบัติตามระเบียบวินัยการลงทุนอย่างเข้มงวดเช่นเดิม



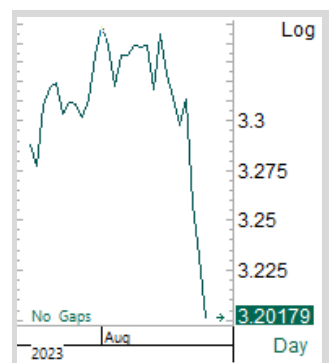
SET/SET50



SET/SET100

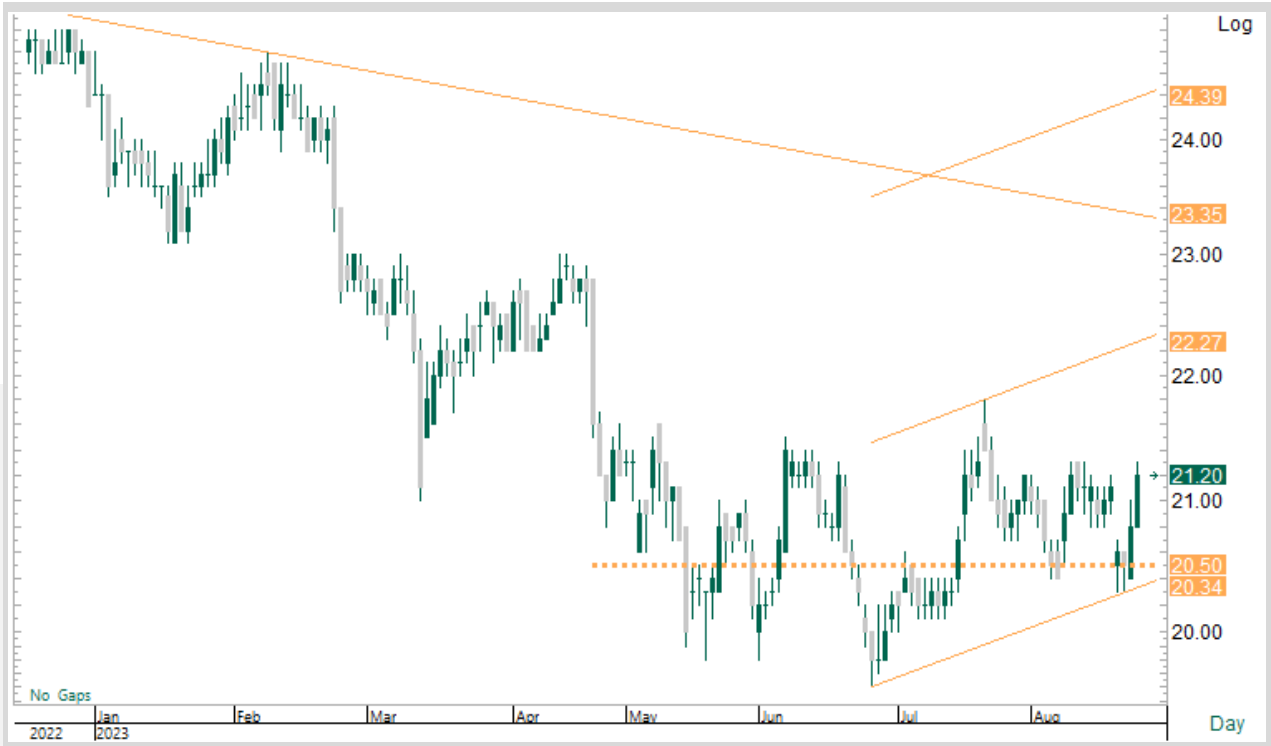


SET/SSET



SET/MAI

\* การลงทุนมีความเสี่ยง ผู้ลงทุนควรศึกษาข้อมูลให้รอบคอบก่อนตัดสินใจลงทุน



## SPALI, SET100 - PROP

บริษัท สุภาลัย จำกัด (มหาชน)

Resistance 21.40 / 21.60

Support 21.00 / 20.80

Adjust Stop 20.80 (Risk 1.89%)

Trailing Stop 20.50 (Risk 3.30%)

Base Stop 20.30 (Risk 4.25%)

Major Base Stop

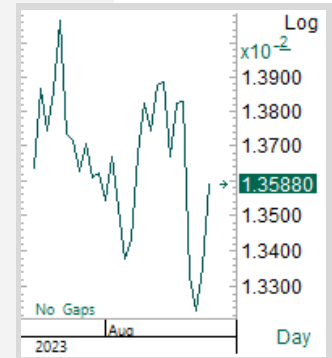
- 19.60 (Risk 7.55%, 27/06/2023)

Highest Price at this Cycle

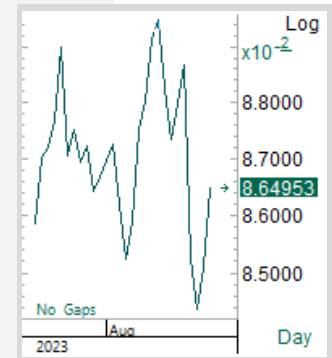
- 21.80 (Discount 2.83%, 20/07/2023)

Short-term Trend - 1st Up

Long-term Trend - 1st Up

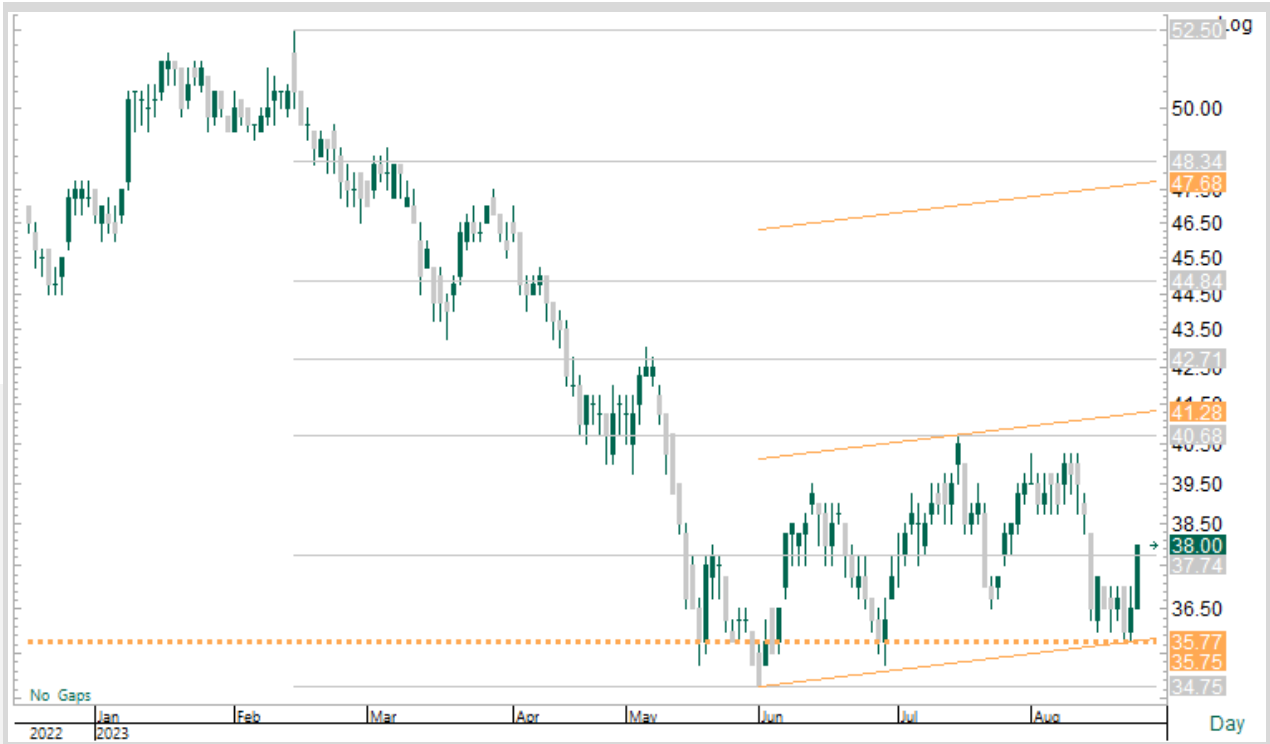


SPALI/SET



SPALI/PROP

\* การลงทุนมีความเสี่ยง ผู้ลงทุนควรศึกษาข้อมูลให้รอบคอบก่อนตัดสินใจลงทุน



## PTTGC, SET50 - PETRO

บริษัท พีทีที โกลบอล เคมิคอล จำกัด (มหาชน)

Resistance 38.50 / 39.00

Support 37.50 / 37.00

Adjust Stop 36.50 (Risk 3.95%)

Trailing Stop 35.75 (Risk 5.92%)

Base Stop 35.75 (Risk 5.92%)

Major Base Stop

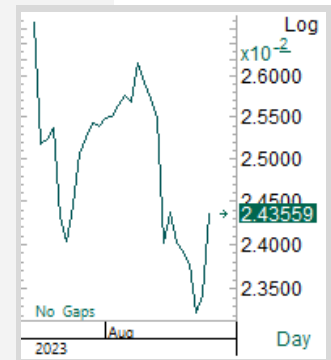
- 34.75 (Risk 8.55%, 01/06/2023)

Highest Price at this Cycle

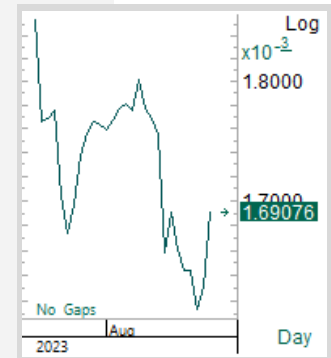
- 40.75 (Discount 7.24%, 14/07/2023)

Short-term Trend - 1st Up

Long-term Trend - Down



PTTGC/SET



PTTGC/PETRO

\* การลงทุนมีความเสี่ยง ผู้ลงทุนควรศึกษาข้อมูลให้รอบคอบก่อนตัดสินใจลงทุน

| No. | Name    | Last      | Change  | %     | Momentum | Pi Volatility Day |           |       | SMA20 Value   |          |          |
|-----|---------|-----------|---------|-------|----------|-------------------|-----------|-------|---------------|----------|----------|
|     |         |           |         |       |          | Start/Stop        | Point     | Trend | (000 Baht)    | Pi Score | Position |
| 1   | CONS    | 60.04     | 0.02    | 0.03  | UP       | STOP              | 57.29     | UP    | 418,306.25    | 58.51    | 1        |
| 2   | SET100  | 2,134.73  | 1.70    | 0.08  | UP       | STOP              | 2,059.98  | UP    | 45,043,889.50 | 57.95    | -1       |
| 3   | FIN     | 3,923.75  | 58.46   | 1.51  | UP       | STOP              | 3,643.38  | UP    | 3,511,281.00  | 55.27    | 3        |
| 4   | AUTO    | 507.79    | 0.67    | 0.13  | UP       | STOP              | 485.78    | UP    | 254,195.15    | 55.21    | 1        |
| 5   | PAPER   | 3,432.02  | 56.26   | 1.67  | UP       | STOP              | 3,153.59  | UP    | 2,898.25      | 53.81    | 5        |
| 6   | ETRON   | 12,982.58 | -332.79 | -2.50 | UP       | START             | 13,579.90 | UP    | 3,529,522.60  | 53.56    | -3       |
| 7   | SET50   | 960.47    | 0.12    | 0.01  | UP       | STOP              | 930.19    | UP    | 36,083,196.20 | 53.50    | -3       |
| 8   | ENERG   | 22,475.06 | 103.23  | 0.46  | UP       | STOP              | 21,603.54 | UP    | 10,181,897.65 | 53.44    | -1       |
| 9   | BANK    | 406.87    | 3.01    | 0.75  | DOWN     | STOP              | 395.27    | UP    | 9,024,680.15  | 52.95    | 2        |
| 10  | MAI     | 487.29    | 5.35    | 1.11  | UP       | STOP              | 463.07    | UP    | 1,503,695.20  | 52.55    | 3        |
| 11  | FOOD    | 11,571.11 | 25.97   | 0.22  | UP       | STOP              | 11,152.01 | UP    | 2,649,917.55  | 52.23    | -2       |
| 12  | COMM    | 35,994.31 | -6.00   | -0.02 | UP       | STOP              | 34,316.09 | UP    | 5,117,117.90  | 51.86    | -4       |
| 13  | FASHION | 702.00    | -1.15   | -0.16 | DOWN     | STOP              | 674.53    | UP    | 129,517.30    | 49.86    | -1       |
| 14  | SSET    | 965.34    | 10.34   | 1.08  | UP       | STOP              | 931.64    | UP    | 2,974,198.25  | 48.82    | 7        |
| 15  | HELTH   | 7,056.99  | 22.42   | 0.32  | DOWN     | STOP              | 6,768.53  | UP    | 2,805,426.80  | 48.53    | -1       |
| 16  | PROF    | 381.74    | 1.04    | 0.27  | UP       | START             | 397.05    | DOWN  | 131,127.05    | 47.95    | -1       |
| 17  | ICT     | 159.04    | 0.64    | 0.40  | DOWN     | STOP              | 152.97    | UP    | 3,299,562.80  | 46.86    | 0        |
| 18  | PROP    | 245.10    | 0.66    | 0.27  | UP       | START             | 246.39    | UP    | 3,355,974.25  | 46.22    | 0        |
| 19  | PKG     | 3,932.53  | 14.64   | 0.37  | UP       | START             | 3,988.48  | DOWN  | 508,378.10    | 45.36    | 1        |
| 20  | TOURISM | 619.96    | -0.73   | -0.12 | DOWN     | START             | 633.52    | DOWN  | 961,174.75    | 45.21    | -1       |
| 21  | TRANS   | 345.93    | -1.75   | -0.50 | UP       | START             | 351.31    | DOWN  | 2,090,602.80  | 44.53    | -5       |
| 22  | CONMAT  | 8,363.84  | 53.38   | 0.64  | UP       | START             | 8,439.91  | DOWN  | 676,849.60    | 43.55    | 1        |
| 23  | MEDIA   | 37.25     | 0.26    | 0.70  | UP       | START             | 37.34     | DOWN  | 329,664.55    | 43.52    | 1        |
| 24  | PERSON  | 93.42     | 0.95    | 1.03  | UP       | START             | 94.89     | DOWN  | 68,437.15     | 43.39    | 1        |
| 25  | HOME    | 21.98     | -0.02   | -0.09 | UP       | STOP              | 21.10     | DOWN  | 13,468.15     | 43.36    | -3       |
| 26  | IMM     | 29.30     | 0.30    | 1.03  | UP       | START             | 29.35     | DOWN  | 9,894.65      | 42.12    | 0        |
| 27  | STEEL   | 29.20     | 0.86    | 3.03  | UP       | START             | 29.40     | DOWN  | 11,207.50     | 41.95    | 2        |
| 28  | INSUR   | 10,238.92 | 66.17   | 0.65  | UP       | START             | 10,467.62 | DOWN  | 216,913.80    | 39.26    | -1       |
| 29  | PETRO   | 781.95    | 23.55   | 3.11  | UP       | START             | 820.22    | DOWN  | 1,240,067.40  | 38.78    | 1        |
| 30  | PFNREIT | 135.47    | -0.13   | -0.10 | DOWN     | START             | 138.51    | DOWN  | 149,478.75    | 36.34    | -2       |
| 31  | AGRI    | 180.28    | 3.79    | 2.15  | UP       | START             | 181.81    | DOWN  | 258,170.25    | 34.86    | 0        |

## Bull Gauge

16

### Most 5 Aggressive Bulls

1. SSET
2. PAPER
3. FIN - SGC NCAP SAWAD CHASE XPG
4. MAI
5. BANK

## Bear Gauge

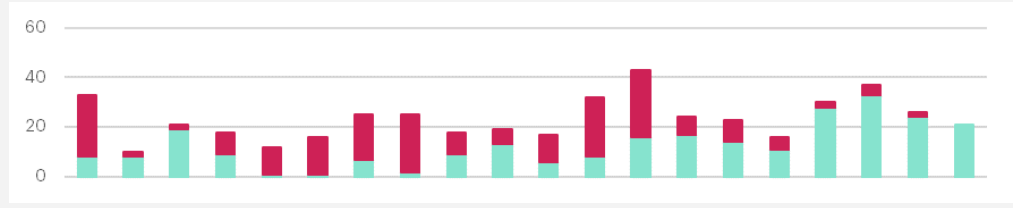
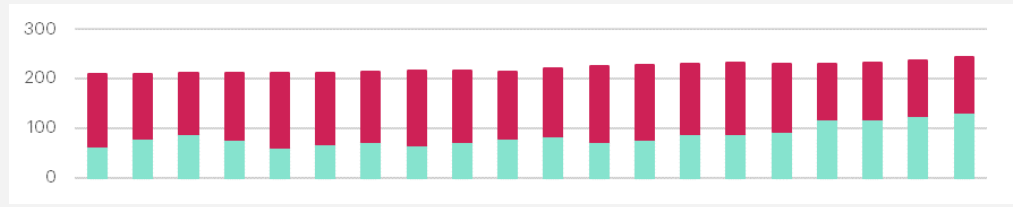
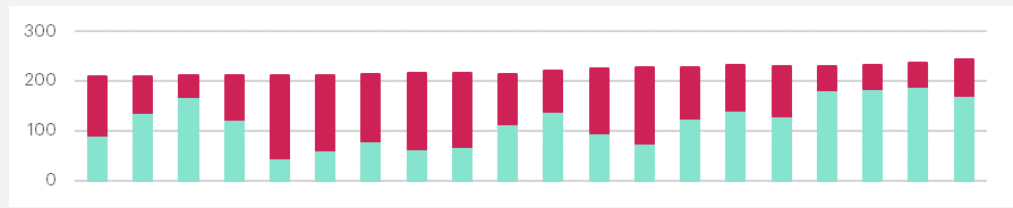
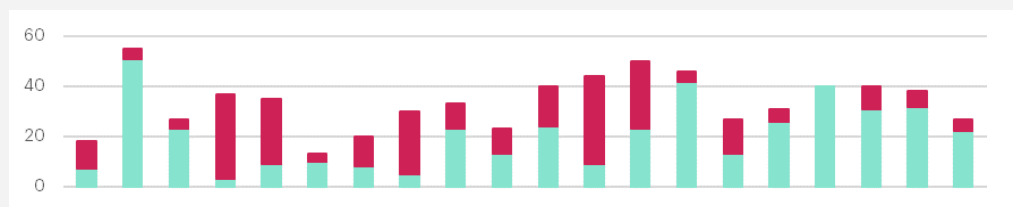
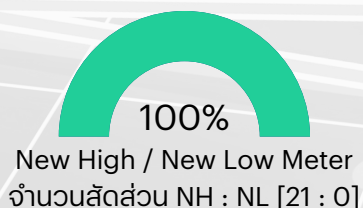
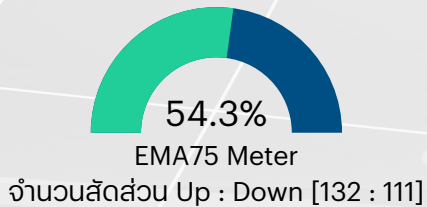
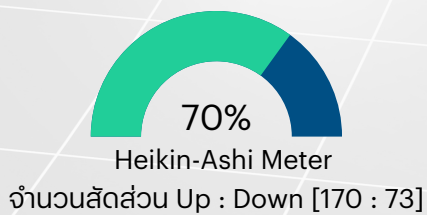
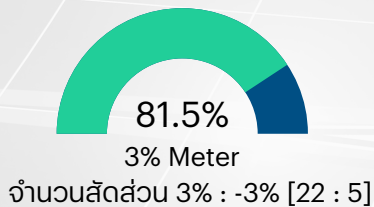
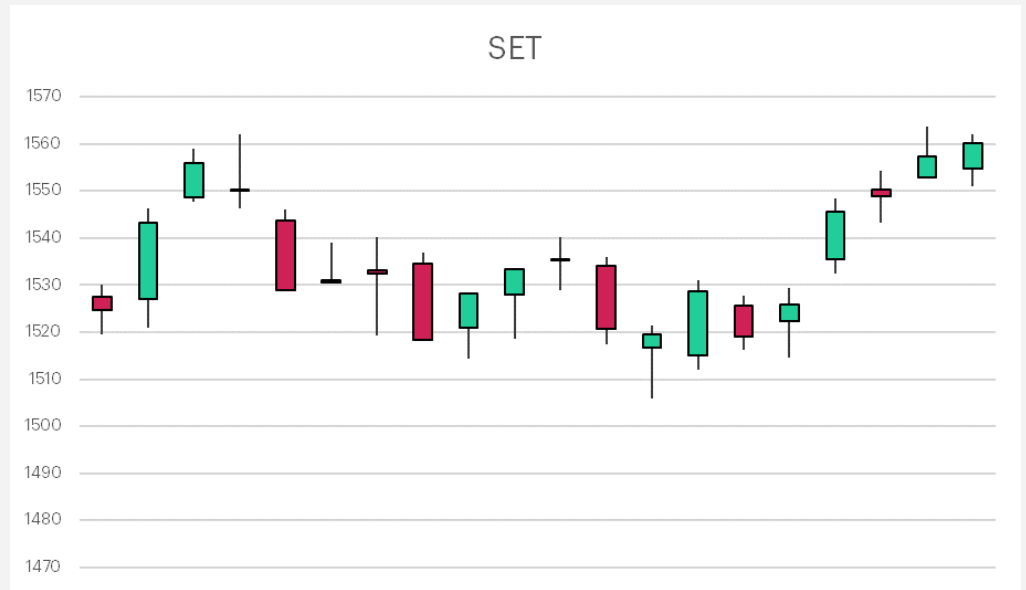
15

### Most 5 Aggressive Bears

1. TRANS - BTSGIF
2. COMM
3. HOME
4. SET50
5. ETRON

\* การลงทุนมีความเสี่ยง ผู้ลงทุนควรศึกษาข้อมูลหรือขอคำปรึกษาจากผู้เชี่ยวชาญก่อนตัดสินใจลงทุน

# Pi Meter Monitoring System



\* การลงทุนมีความเสี่ยง ผู้ลงทุนควรศึกษาข้อมูลให้รอบคอบก่อนตัดสินใจลงทุน

# pi Technical Daily

## 28 August 2023

| Class B |      | Pi Volatility Day |        |      |          |            |       |       | SMA20 Value |          |          | H-Ashi | EMA75 | N-High |
|---------|------|-------------------|--------|------|----------|------------|-------|-------|-------------|----------|----------|--------|-------|--------|
| No.     | Name | Last              | Change | %    | Momentum | Start/Stop | Point | Trend | ('000 Baht) | Pi Score | Position |        |       |        |
| 1       | XO   | 31.75             | -      | -    | UP       | STOP       | 27.87 | UP    | 129,685.45  | 70.94    | 1        |        |       |        |
| 2       | UEC  | 1.85              | 0.01   | 0.54 | DOWN     | STOP       | 1.76  | UP    | 11,921.10   | 70.51    | 1        |        |       |        |

| Class C |        | Pi Volatility Day |        |        |          |            |       |       | SMA20 Value  |          |          | H-Ashi | EMA75 | N-High |
|---------|--------|-------------------|--------|--------|----------|------------|-------|-------|--------------|----------|----------|--------|-------|--------|
| No.     | Name   | Last              | Change | %      | Momentum | Start/Stop | Point | Trend | ('000 Baht)  | Pi Score | Position |        |       |        |
| 3       | KGEN   | 1.37              | 0.19   | 16.10  | UP       | STOP       | 1.07  | UP    | 22,811.30    | 64.43    | 25       |        |       |        |
| 4       | JAS    | 2.04              | 0.22   | 12.09  | UP       | STOP       | 1.72  | UP    | 34,532.05    | 65.06    | 20       |        |       |        |
| 5       | TKC    | 27.75             | 1.00   | 3.74   | UP       | STOP       | 24.89 | UP    | 37,995.15    | 65.36    | 6        |        |       |        |
| 6       | WHA    | 5.25              | 0.10   | 1.94   | UP       | STOP       | 4.91  | UP    | 407,518.80   | 63.13    | 4        |        |       |        |
| 7       | A5     | 5.20              | 0.10   | 1.96   | UP       | STOP       | 4.71  | UP    | 16,635.55    | 61.74    | 3        |        |       |        |
| 8       | XPG    | 1.44              | 0.05   | 3.60   | UP       | STOP       | 1.20  | UP    | 284,305.45   | 61.34    | 3        |        |       |        |
| 9       | HANA   | 62.75             | - 0.25 | - 0.40 | DOWN     | STOP       | 56.72 | UP    | 1,208,497.80 | 67.96    | 1        |        |       |        |
| 10      | SKY    | 34.00             | 0.25   | 0.74   | UP       | STOP       | 30.01 | UP    | 105,680.55   | 66.57    | 1        |        |       |        |
| 11      | COM7   | 32.00             | 0.25   | 0.79   | UP       | STOP       | 28.78 | UP    | 482,474.45   | 61.53    | -1       |        |       |        |
| 12      | ICHI   | 16.70             | -      | -      | UP       | STOP       | 14.91 | UP    | 169,246.15   | 61.53    | -2       |        |       |        |
| 13      | MBK    | 18.20             | 0.10   | 0.55   | UP       | STOP       | 16.72 | UP    | 37,664.60    | 60.74    | -2       |        |       |        |
| 14      | WPH    | 5.70              | - 0.25 | - 4.20 | UP       | STOP       | 5.04  | UP    | 14,386.00    | 67.05    | -3       |        |       |        |
| 15      | KCE    | 50.00             | - 0.75 | - 1.48 | UP       | STOP       | 44.61 | UP    | 847,800.35   | 65.05    | -3       |        |       |        |
| 16      | SMT    | 5.35              | -      | -      | UP       | STOP       | 4.71  | UP    | 22,761.90    | 62.97    | -4       |        |       |        |
| 17      | ALPHAX | 1.49              | - 0.01 | - 0.67 | DOWN     | STOP       | 1.35  | UP    | 27,305.35    | 63.13    | -5       |        |       |        |

| Class D |        | Pi Volatility Day |        |       |          |            |        |       | SMA20 Value  |          |          | H-Ashi | EMA75 | N-High |
|---------|--------|-------------------|--------|-------|----------|------------|--------|-------|--------------|----------|----------|--------|-------|--------|
| No.     | Name   | Last              | Change | %     | Momentum | Start/Stop | Point  | Trend | ('000 Baht)  | Pi Score | Position |        |       |        |
| 18      | RABBIT | 0.69              | 0.16   | 30.19 | UP       | STOP       | 0.49   | UP    | 15,645.65    | 57.75    | 167      |        |       |        |
| 19      | SINGER | 11.30             | 1.00   | 9.71  | UP       | STOP       | 8.86   | UP    | 242,259.45   | 52.93    | 51       |        |       |        |
| 20      | TISCO  | 102.00            | 2.25   | 2.26  | UP       | STOP       | 98.31  | UP    | 302,783.95   | 55.43    | 44       |        |       |        |
| 21      | SAWAD  | 50.25             | 2.00   | 4.15  | UP       | START      | 50.50  | UP    | 538,065.35   | 51.01    | 41       |        |       |        |
| 22      | NC     | 8.65              | 1.05   | 13.82 | UP       | STOP       | 5.62   | UP    | 33,993.25    | 56.89    | 29       |        |       |        |
| 23      | SYNEX  | 13.20             | 0.40   | 3.12  | UP       | STOP       | 11.45  | UP    | 12,532.05    | 56.06    | 29       |        |       |        |
| 24      | TQM    | 30.25             | 1.00   | 3.42  | UP       | STOP       | 27.15  | UP    | 17,219.25    | 56.02    | 26       |        |       |        |
| 25      | ORI    | 10.80             | 0.20   | 1.89  | UP       | STOP       | 9.98   | UP    | 48,008.35    | 50.84    | 26       |        |       |        |
| 26      | ESSO   | 9.55              | 0.20   | 2.14  | UP       | START      | 9.69   | UP    | 186,734.90   | 54.24    | 24       |        |       |        |
| 27      | PSG    | 1.06              | 0.05   | 4.95  | UP       | STOP       | 0.92   | UP    | 40,899.55    | 59.16    | 22       |        |       |        |
| 28      | TTW    | 9.00              | 0.15   | 1.69  | UP       | STOP       | 8.59   | UP    | 14,930.20    | 55.24    | 21       |        |       |        |
| 29      | TTB    | 1.76              | 0.04   | 2.33  | DOWN     | STOP       | 1.69   | UP    | 796,985.00   | 57.11    | 19       |        |       |        |
| 30      | FSMART | 9.85              | 0.30   | 3.14  | UP       | STOP       | 8.74   | UP    | 25,025.20    | 54.81    | 18       |        |       |        |
| 31      | AEONTS | 178.50            | 2.50   | 1.42  | UP       | STOP       | 164.10 | UP    | 64,212.30    | 52.24    | 17       |        |       |        |
| 32      | JMART  | 22.30             | 1.10   | 5.19  | UP       | STOP       | 18.75  | UP    | 598,501.85   | 59.34    | 16       |        |       |        |
| 33      | EA     | 65.00             | 1.25   | 1.96  | UP       | STOP       | 58.79  | UP    | 1,043,020.75 | 55.88    | 14       |        |       |        |
| 34      | AH     | 35.00             | 0.75   | 2.19  | UP       | STOP       | 31.58  | UP    | 31,653.40    | 52.91    | 14       |        |       |        |
| 35      | PROUD  | 2.10              | 0.08   | 3.96  | UP       | STOP       | 1.84   | UP    | 29,557.95    | 58.89    | 13       |        |       |        |
| 36      | DITTO  | 34.50             | 1.00   | 2.99  | UP       | STOP       | 29.60  | UP    | 109,242.55   | 54.57    | 12       |        |       |        |
| 37      | TEAMG  | 7.60              | 0.15   | 2.01  | UP       | STOP       | 6.59   | UP    | 32,589.15    | 51.99    | 12       |        |       |        |
| 38      | BPP    | 14.90             | 0.10   | 0.68  | UP       | STOP       | 14.05  | UP    | 11,834.00    | 51.27    | 12       |        |       |        |
| 39      | BE8    | 46.00             | 0.75   | 1.66  | UP       | STOP       | 41.36  | UP    | 59,483.10    | 53.92    | 11       |        |       |        |
| 40      | BCH    | 19.40             | 0.20   | 1.04  | UP       | STOP       | 18.16  | UP    | 209,890.95   | 55.70    | 9        |        |       |        |
| 41      | TIDLOR | 23.90             | 0.40   | 1.70  | UP       | STOP       | 21.27  | UP    | 634,472.80   | 52.76    | 9        |        |       |        |
| 42      | KBANK  | 132.00            | 1.00   | 0.76  | DOWN     | STOP       | 124.50 | UP    | 3,790,261.35 | 50.15    | 9        |        |       |        |
| 43      | SPA    | 12.90             | 0.20   | 1.57  | DOWN     | STOP       | 12.12  | UP    | 32,695.60    | 59.09    | 8        |        |       |        |
| 44      | STEC   | 11.50             | 0.20   | 1.77  | DOWN     | STOP       | 10.46  | UP    | 233,744.30   | 57.15    | 8        |        |       |        |
| 45      | TIPIP  | 3.42              | 0.02   | 0.59  | UP       | STOP       | 3.28   | UP    | 10,909.10    | 51.63    | 8        |        |       |        |
| 46      | PTTEP  | 159.00            | 1.50   | 0.95  | DOWN     | START      | 165.88 | UP    | 1,448,341.80 | 50.34    | 8        |        |       |        |
| 47      | PLANB  | 9.35              | 0.15   | 1.63  | DOWN     | STOP       | 8.50   | UP    | 115,347.35   | 57.51    | 7        |        |       |        |

\* การลงทุนมีความเสี่ยง ผู้ลงทุนควรศึกษาข้อมูลให้รอบคอบก่อนตัดสินใจลงทุน

# pi Technical Daily

## 28 August 2023

|    |        |        |        |        |      |       |        |    |              |       |     |  |  |  |
|----|--------|--------|--------|--------|------|-------|--------|----|--------------|-------|-----|--|--|--|
| 48 | CHASE  | 2.22   | 0.08   | 3.74   | UP   | STOP  | 1.85   | UP | 33,502.80    | 58.30 | 6   |  |  |  |
| 49 | SAMART | 5.90   | 0.10   | 1.72   | UP   | STOP  | 5.27   | UP | 28,125.10    | 51.94 | 6   |  |  |  |
| 50 | SCB    | 117.00 | 1.00   | 0.86   | UP   | STOP  | 111.54 | UP | 1,182,269.15 | 59.93 | 5   |  |  |  |
| 51 | FORTH  | 34.25  | 0.75   | 2.24   | UP   | STOP  | 29.38  | UP | 60,459.35    | 58.87 | 5   |  |  |  |
| 52 | MTC    | 40.50  | 0.50   | 1.25   | UP   | STOP  | 35.80  | UP | 453,361.40   | 55.57 | 5   |  |  |  |
| 53 | AAV    | 2.76   | 0.02   | 0.73   | UP   | STOP  | 2.56   | UP | 62,234.15    | 50.21 | 5   |  |  |  |
| 54 | JMT    | 46.50  | 1.00   | 2.20   | UP   | STOP  | 41.01  | UP | 613,843.80   | 58.76 | 4   |  |  |  |
| 55 | AMATA  | 24.10  | 0.20   | 0.84   | UP   | STOP  | 22.67  | UP | 170,010.25   | 54.87 | 3   |  |  |  |
| 56 | SIS    | 22.00  | 0.30   | 1.38   | UP   | STOP  | 18.90  | UP | 26,050.25    | 59.90 | 1   |  |  |  |
| 57 | SIRI   | 2.04   | 0.02   | 0.99   | UP   | STOP  | 1.82   | UP | 905,854.35   | 55.57 | 1   |  |  |  |
| 58 | SFLEX  | 4.30   | 0.02   | 0.47   | UP   | STOP  | 3.81   | UP | 24,052.80    | 53.52 | 0   |  |  |  |
| 59 | MGC    | 8.45   | 0.05   | 0.60   | DOWN | STOP  | 7.55   | UP | 15,292.50    | 51.19 | 0   |  |  |  |
| 60 | THCOM  | 14.40  | 0.10   | 0.70   | UP   | STOP  | 12.60  | UP | 229,340.20   | 58.91 | -1  |  |  |  |
| 61 | CHAYO  | 8.00   | 0.05   | 0.63   | UP   | STOP  | 7.19   | UP | 25,980.65    | 56.42 | -1  |  |  |  |
| 62 | TKN    | 13.00  | -      | -      | DOWN | STOP  | 11.41  | UP | 149,161.85   | 59.28 | -2  |  |  |  |
| 63 | GUNKUL | 3.72   | 0.02   | 0.54   | UP   | STOP  | 3.40   | UP | 165,154.40   | 58.88 | -2  |  |  |  |
| 64 | ERW    | 5.15   | -      | -      | DOWN | STOP  | 4.70   | UP | 87,250.95    | 56.89 | -5  |  |  |  |
| 65 | KAMART | 13.60  | -      | -      | DOWN | STOP  | 12.98  | UP | 114,133.00   | 52.43 | -5  |  |  |  |
| 66 | HENG   | 2.60   | -      | -      | UP   | STOP  | 2.40   | UP | 10,213.10    | 50.70 | -5  |  |  |  |
| 67 | TH     | 1.66   | - 0.02 | - 1.19 | DOWN | STOP  | 1.39   | UP | 72,279.65    | 59.15 | -7  |  |  |  |
| 68 | CPALL  | 65.50  | -      | -      | UP   | STOP  | 62.01  | UP | 2,091,260.00 | 54.98 | -10 |  |  |  |
| 69 | TEAM   | 6.60   | - 0.05 | - 0.75 | UP   | STOP  | 5.80   | UP | 26,703.25    | 54.14 | -10 |  |  |  |
| 70 | MEGA   | 42.25  | -      | -      | DOWN | STOP  | 39.29  | UP | 76,645.55    | 55.35 | -11 |  |  |  |
| 71 | RBF    | 11.40  | - 0.10 | - 0.87 | DOWN | STOP  | 10.24  | UP | 58,233.90    | 53.67 | -12 |  |  |  |
| 72 | 7UP    | 0.52   | - 0.01 | - 1.89 | UP   | STOP  | 0.44   | UP | 32,073.30    | 51.17 | -13 |  |  |  |
| 73 | MPIC   | 1.67   | - 0.02 | - 1.18 | UP   | STOP  | 1.34   | UP | 10,723.20    | 50.96 | -14 |  |  |  |
| 74 | GLOBAL | 18.00  | - 0.10 | - 0.55 | DOWN | STOP  | 16.50  | UP | 201,345.60   | 55.54 | -18 |  |  |  |
| 75 | BEM    | 9.05   | - 0.05 | - 0.55 | UP   | STOP  | 8.54   | UP | 209,324.55   | 53.83 | -19 |  |  |  |
| 76 | MC     | 12.40  | - 0.20 | - 1.59 | DOWN | START | 12.97  | UP | 39,534.95    | 50.42 | -20 |  |  |  |

| Class E |        | Pi Volatility Day |        |      |          |            |        |       | SMA20 Value  |          |          | H-Ashi | EMA75 | N-High |
|---------|--------|-------------------|--------|------|----------|------------|--------|-------|--------------|----------|----------|--------|-------|--------|
| No.     | Name   | Last              | Change | %    | Momentum | Start/Stop | Point  | Trend | ('000 Baht)  | Pi Score | Position |        |       |        |
| 77      | PTTGC  | 38.00             | 1.50   | 4.11 | UP       | START      | 39.82  | DOWN  | 568,297.15   | 45.95    | 39       |        |       |        |
| 78      | SPALI  | 21.20             | 0.40   | 1.92 | UP       | START      | 21.62  | UP    | 127,332.60   | 49.36    | 37       |        |       |        |
| 79      | EGCO   | 137.00            | 2.50   | 1.86 | UP       | START      | 137.75 | DOWN  | 173,740.85   | 47.01    | 32       |        |       |        |
| 80      | SGC    | 1.82              | 0.08   | 4.60 | UP       | STOP       | 1.52   | DOWN  | 70,312.15    | 49.69    | 27       |        |       |        |
| 81      | THANI  | 3.32              | 0.04   | 1.22 | UP       | STOP       | 3.06   | DOWN  | 22,964.70    | 47.83    | 27       |        |       |        |
| 82      | JASIF  | 6.95              | 0.10   | 1.46 | UP       | STOP       | 6.50   | DOWN  | 50,767.00    | 47.69    | 26       |        |       |        |
| 83      | NCAP   | 3.92              | 0.16   | 4.26 | UP       | STOP       | 3.28   | DOWN  | 75,200.90    | 48.71    | 25       |        |       |        |
| 84      | PRAPAT | 2.18              | 0.06   | 2.83 | UP       | START      | 2.41   | DOWN  | 13,615.15    | 47.83    | 22       |        |       |        |
| 85      | MVP    | 1.72              | 0.06   | 3.61 | UP       | STOP       | 1.37   | DOWN  | 10,071.90    | 44.72    | 21       |        |       |        |
| 86      | SABUY  | 7.90              | 0.55   | 7.48 | UP       | START      | 8.27   | DOWN  | 161,428.40   | 42.80    | 21       |        |       |        |
| 87      | UVAN   | 8.35              | 0.10   | 1.21 | DOWN     | START      | 9.02   | DOWN  | 14,703.05    | 47.13    | 16       |        |       |        |
| 88      | KBS    | 5.80              | 0.30   | 5.45 | UP       | START      | 6.29   | DOWN  | 16,342.45    | 42.74    | 16       |        |       |        |
| 89      | SCC    | 319.00            | 3.00   | 0.95 | UP       | START      | 325.77 | DOWN  | 495,082.35   | 44.07    | 14       |        |       |        |
| 90      | KTB    | 19.30             | 0.20   | 1.05 | DOWN     | START      | 20.32  | DOWN  | 1,265,481.00 | 45.97    | 13       |        |       |        |
| 91      | INTUCH | 73.50             | 0.75   | 1.03 | DOWN     | STOP       | 72.74  | DOWN  | 271,115.90   | 44.62    | 13       |        |       |        |
| 92      | EPG    | 6.50              | 0.15   | 2.36 | UP       | START      | 6.81   | DOWN  | 13,478.15    | 43.79    | 13       |        |       |        |
| 93      | STGT   | 7.10              | 0.15   | 2.16 | UP       | START      | 7.18   | DOWN  | 38,320.15    | 41.27    | 10       |        |       |        |
| 94      | BGRIM  | 37.25             | 0.25   | 0.68 | UP       | STOP       | 35.10  | UP    | 331,370.70   | 49.52    | 9        |        |       |        |
| 95      | TOA    | 28.00             | 0.25   | 0.90 | UP       | START      | 28.47  | DOWN  | 50,531.40    | 48.93    | 8        |        |       |        |
| 96      | GPSC   | 55.75             | 0.50   | 0.90 | UP       | START      | 56.88  | DOWN  | 525,886.25   | 45.71    | 8        |        |       |        |
| 97      | TFG    | 3.88              | 0.06   | 1.57 | UP       | START      | 3.89   | DOWN  | 20,840.00    | 41.51    | 8        |        |       |        |
| 98      | TRUE   | 7.00              | 0.05   | 0.72 | UP       | STOP       | 6.45   | UP    | 426,266.20   | 49.40    | 6        |        |       |        |
| 99      | KTC    | 48.50             | 0.25   | 0.52 | UP       | START      | 48.65  | DOWN  | 262,671.85   | 47.25    | 6        |        |       |        |

\* การลงทุนมีความเสี่ยง ผู้ลงทุนควรศึกษาข้อมูลให้รอบคอบก่อนตัดสินใจลงทุน

# pi Technical Daily

## 28 August 2023

|     |        |       |        |        |      |       |       |      |              |       |     |  |  |
|-----|--------|-------|--------|--------|------|-------|-------|------|--------------|-------|-----|--|--|
| 100 | BRI    | 9.35  | 0.05   | 0.54   | UP   | STOP  | 8.70  | DOWN | 22,120.55    | 46.64 | 6   |  |  |
| 101 | SVI    | 8.10  | 0.05   | 0.62   | UP   | START | 8.50  | DOWN | 14,061.70    | 46.61 | 6   |  |  |
| 102 | SAT    | 19.00 | 0.10   | 0.53   | UP   | START | 19.50 | DOWN | 13,165.50    | 44.58 | 6   |  |  |
| 103 | BDMS   | 27.75 | 0.25   | 0.91   | DOWN | STOP  | 26.97 | DOWN | 1,294,964.65 | 44.11 | 6   |  |  |
| 104 | PSL    | 8.85  | 0.15   | 1.72   | UP   | START | 9.33  | DOWN | 88,795.00    | 40.89 | 5   |  |  |
| 105 | TIPCO  | 9.40  | 0.15   | 1.62   | UP   | START | 10.46 | DOWN | 31,693.00    | 40.91 | 2   |  |  |
| 106 | TLI    | 11.00 | 0.10   | 0.92   | UP   | START | 11.45 | DOWN | 101,491.15   | 40.83 | 1   |  |  |
| 107 | CENDEL | 44.75 | 0.50   | 1.13   | UP   | START | 47.17 | DOWN | 326,534.00   | 44.05 | 0   |  |  |
| 108 | NER    | 4.64  | 0.02   | 0.43   | UP   | STOP  | 4.49  | DOWN | 22,523.80    | 43.18 | 0   |  |  |
| 109 | PTG    | 10.60 | 0.10   | 0.95   | UP   | START | 10.95 | DOWN | 86,244.60    | 41.94 | 0   |  |  |
| 110 | BLA    | 23.80 | 0.20   | 0.85   | UP   | START | 24.71 | DOWN | 54,409.15    | 41.89 | 0   |  |  |
| 111 | PRTR   | 6.65  | 0.05   | 0.76   | UP   | STOP  | 5.66  | UP   | 11,233.45    | 49.93 | -1  |  |  |
| 112 | IIG    | 19.00 | 0.10   | 0.53   | UP   | START | 19.71 | DOWN | 19,060.70    | 47.59 | -1  |  |  |
| 113 | ONEE   | 4.74  | 0.04   | 0.85   | UP   | START | 4.83  | DOWN | 31,992.30    | 43.50 | -1  |  |  |
| 114 | BANPU  | 8.85  | 0.05   | 0.57   | UP   | START | 9.47  | DOWN | 1,095,704.85 | 43.34 | -1  |  |  |
| 115 | GABLE  | 4.96  | -      | -      | UP   | STOP  | 4.47  | DOWN | 14,989.00    | 45.99 | -2  |  |  |
| 116 | MAJOR  | 14.70 | -      | -      | DOWN | STOP  | 14.28 | DOWN | 42,528.25    | 44.15 | -3  |  |  |
| 117 | TPL    | 2.10  | -      | -      | UP   | STOP  | 1.62  | UP   | 25,332.30    | 44.94 | -4  |  |  |
| 118 | LPF    | 12.70 | -      | -      | DOWN | START | 13.12 | DOWN | 13,562.45    | 44.27 | -4  |  |  |
| 119 | RS     | 14.60 | -      | -      | UP   | STOP  | 13.87 | UP   | 18,924.25    | 49.82 | -5  |  |  |
| 120 | PRIME  | 1.34  | -      | -      | UP   | START | 1.42  | DOWN | 12,684.70    | 48.97 | -5  |  |  |
| 121 | HMPRO  | 13.80 | -      | -      | UP   | START | 14.37 | DOWN | 357,223.30   | 45.51 | -5  |  |  |
| 122 | SNNP   | 22.20 | -      | -      | UP   | START | 22.49 | DOWN | 125,821.85   | 47.00 | -6  |  |  |
| 123 | ASK    | 25.75 | -      | -      | UP   | STOP  | 23.72 | DOWN | 14,799.50    | 48.58 | -7  |  |  |
| 124 | QH     | 2.28  | -      | -      | DOWN | STOP  | 2.21  | DOWN | 29,494.20    | 46.55 | -7  |  |  |
| 125 | PR9    | 17.10 | -      | -      | DOWN | START | 18.13 | DOWN | 35,636.70    | 43.18 | -8  |  |  |
| 126 | AIT    | 4.98  | - 0.02 | - 0.40 | DOWN | STOP  | 4.83  | DOWN | 10,503.70    | 46.08 | -9  |  |  |
| 127 | BTG    | 23.50 | -      | -      | UP   | START | 24.14 | DOWN | 51,688.95    | 42.82 | -9  |  |  |
| 128 | KLINIQ | 36.75 | - 0.25 | - 0.68 | DOWN | START | 39.31 | DOWN | 40,950.50    | 46.25 | -11 |  |  |
| 129 | KKP    | 60.00 | - 0.25 | - 0.41 | UP   | STOP  | 57.25 | UP   | 265,319.70   | 48.95 | -17 |  |  |
| 130 | MINT   | 33.25 | - 0.25 | - 0.75 | DOWN | START | 34.03 | UP   | 501,604.85   | 49.21 | -18 |  |  |
| 131 | OSP    | 29.00 | - 0.25 | - 0.85 | DOWN | START | 29.86 | DOWN | 170,241.50   | 46.46 | -19 |  |  |
| 132 | PRM    | 6.35  | - 0.10 | - 1.55 | UP   | STOP  | 6.13  | DOWN | 21,261.05    | 46.03 | -24 |  |  |
| 133 | BTSGIF | 3.46  | - 0.14 | - 3.89 | DOWN | START | 3.60  | DOWN | 17,941.15    | 40.56 | -70 |  |  |

| Class F |        |       |        |        |          |            |       |       |             |          |          | Pi Volatility Day |  |  | SMA20 Value |  |  | H-Ashi | EMA75 | N-High |
|---------|--------|-------|--------|--------|----------|------------|-------|-------|-------------|----------|----------|-------------------|--|--|-------------|--|--|--------|-------|--------|
| No.     | Name   | Last  | Change | %      | Momentum | Start/Stop | Point | Trend | (‘000 Baht) | Pi Score | Position |                   |  |  |             |  |  |        |       |        |
| 134     | STA    | 14.60 | 0.70   | 5.04   | UP       | STOP       | 12.16 | DOWN  | 156,064.25  | 38.54    | 9        |                   |  |  |             |  |  |        |       |        |
| 135     | IVL    | 29.50 | 0.75   | 2.61   | DOWN     | START      | 32.10 | DOWN  | 617,584.95  | 36.77    | 5        |                   |  |  |             |  |  |        |       |        |
| 136     | LH     | 8.30  | 0.05   | 0.61   | DOWN     | START      | 8.60  | DOWN  | 327,793.65  | 38.16    | 3        |                   |  |  |             |  |  |        |       |        |
| 137     | SHR    | 2.78  | 0.02   | 0.72   | UP       | START      | 2.88  | DOWN  | 21,537.05   | 38.27    | 2        |                   |  |  |             |  |  |        |       |        |
| 138     | DIF    | 9.30  | 0.15   | 1.64   | UP       | START      | 9.75  | DOWN  | 198,300.95  | 29.66    | 1        |                   |  |  |             |  |  |        |       |        |
| 139     | TVO    | 23.20 | 0.20   | 0.87   | DOWN     | START      | 24.47 | DOWN  | 25,918.90   | 36.54    | 0        |                   |  |  |             |  |  |        |       |        |
| 140     | BAREIT | 9.95  | 0.15   | 1.53   | DOWN     | START      | 10.36 | DOWN  | 20,170.50   | 35.24    | 0        |                   |  |  |             |  |  |        |       |        |
| 141     | KEX    | 8.10  | 0.15   | 1.89   | UP       | START      | 8.50  | DOWN  | 15,113.45   | 35.49    | -1       |                   |  |  |             |  |  |        |       |        |
| 142     | RCL    | 21.60 | 0.20   | 0.93   | DOWN     | START      | 22.86 | DOWN  | 52,781.15   | 35.28    | -2       |                   |  |  |             |  |  |        |       |        |
| 143     | BLC    | 5.35  | - 0.05 | - 0.93 | UP       | STOP       | 4.66  | DOWN  | 14,644.15   | 36.44    | -3       |                   |  |  |             |  |  |        |       |        |
| 144     | IP     | 10.10 | - 0.10 | - 0.98 | UP       | START      | 11.23 | DOWN  | 12,240.85   | 37.49    | -4       |                   |  |  |             |  |  |        |       |        |
| 145     | SJWD   | 14.20 | - 0.20 | - 1.39 | DOWN     | START      | 15.60 | DOWN  | 40,714.65   | 37.12    | -4       |                   |  |  |             |  |  |        |       |        |

\* การลงทุนมีความเสี่ยง ผู้ลงทุนควรศึกษาข้อมูลให้รอบคอบก่อนตัดสินใจลงทุน